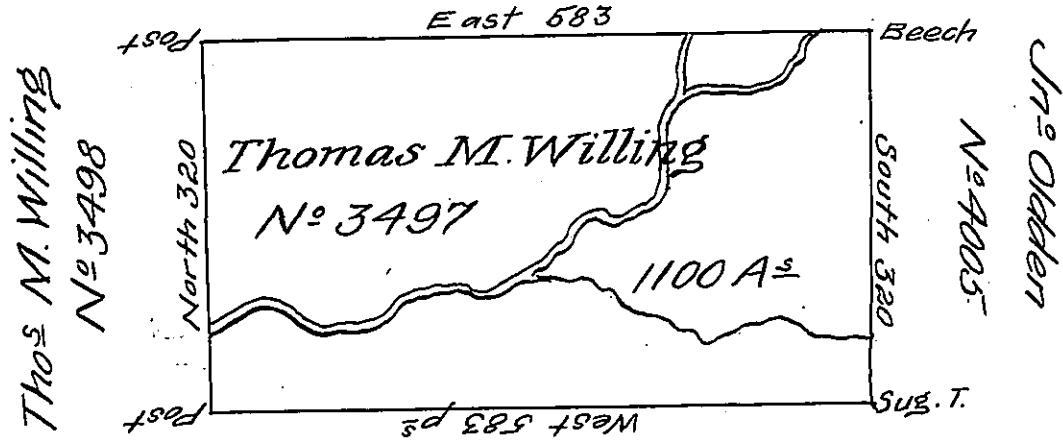


Thos M. Willing

N^o 3496



N^o 3387

Robert Gilmore

Situate on the East Branch of the Ischunungwandt
 Creek Three Miles ~~East~~^{South} of the State Line in the last purchase
 District N^o 4 Surveyed June the twenty Eighth 1793 in
 Pursuance of a Warrant to Thomas M. Willing Dated the four-
 teenth day of ~~June~~ December 1792 N^o 3497 for 1000 Acres
 Containing Eleven hundred Acres and the usual Allow-
 ance of Six p^s C^t for Roads.

To Daniel Brodhead Esq^{re} S.G.

p^s James Hunter D.S.

June 28th

IN TESTIMONY that the above is a copy of the original remaining on file in
 the Department of Internal Affairs of Pennsylvania, made
 conformably to an Act of Assembly approved the 16th day of
 February, 1833, I have hereunto set my Hand and caused
 the Seal of said Department to be affixed at Harrisburg,
 this sixteenth day of April 1907.

Geo. B. Brown
 Secretary of Internal Affairs